

Product Data Sheet

Virtual Central Management System Software (VCMS) for LES1200, LES1500 and LES1700 Console Servers



Use the Virtual Central Management System (VCMS) with LES Series Console Servers in a data center application

OVERVIEW

Manage large numbers of console servers over a wide geographic area, even globally. The Virtual Central Management System (VCMS) builds on the capabilities of Black Box's data center and remote site management appliances (LES1200–LES1700 series console servers) to provide a single point of management for your entire out-of-band infrastructure.

FEATURES

- ♦ Central network hub and management portal for Black Box LES Series Console Servers for resilient management
- ♦ Scalable administration and automation—from Day One provisioning to routine operations, and disaster recovery
- ♦ Seamless, always-available connectivity, regardless of remote WAN or LAN health or status
- ♦ Centralized, secure, end-to-end out-of-band management
- ♦ Access managed devices by name regardless of how they're connected
- ♦ Tunnel through firewalls, carrier NAT and failover via LES-VCMS

Virtual Central Management System (VCMS) for LES Console Servers Data Sheet

EASY SETUP

User Groups

- ♦ Easy to maintain users and permissions
- ♦ Manage users centrally via VCMS or your AAA server
- ♦ Powerful Smart Groups automatically grant users access to matching nodes
- ♦ Automatically and dynamically manage permissions

Smart Groups and Tagging

- ♦ Simple and scalable node management without the complexity.
- ♦ Simplify management with the ability to free text search
- ♦ Filter group nodes by tags, status and/or configuration
- ♦ Quickly sort and search through hundreds of thousands of nodes in enterprise and cloud-scale deployments
- ♦ Easy-to-use GUI enables you to quickly create and automatically associate tags during node provisioning

SIMPLIFIED ENROLLMENT

Secure Accessibility

- ♦ Simplify connectivity with all sessions automatically encrypted with strong OpenVPN based security
- ♦ VPN tunnels back to VCMS via your management network or out-of-band cellular, securing all communications

Zero Touch Deployment

Combining Black Box's LES-VCMS Enrollment bundles and Zero Touch Provisioning provides administrators the tools to automate the configuration and enrollment process.

- ♦ Scalable whether you are deploying 5 or 5000 devices
- ♦ Eliminate hours of manual operations
- ♦ Reduce deployment costs
- ♦ Reduce human errors, guarantee repeatability
- ♦ Equip your management network to scale

DESIGNED AND BUILT FOR NET OPS

Easy to Use

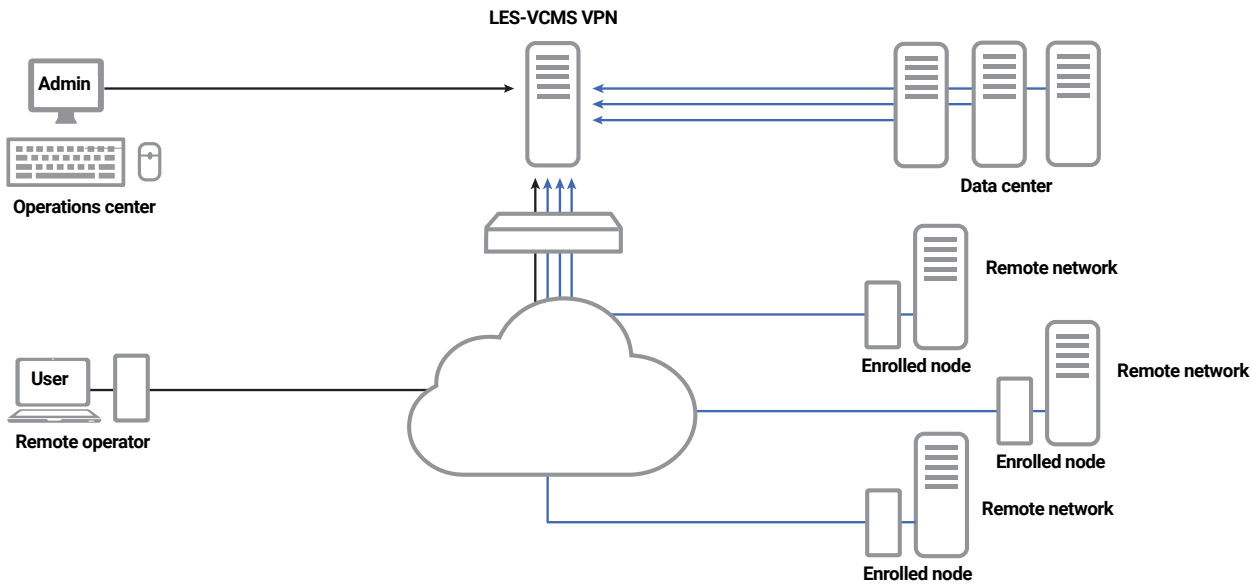
Manage your OOB network with familiar conventions. Support for all SSH clients PuTTY, SecureCRT, OpenSSH. Built-in HTMLS Web Terminal with full copy and paste functionality.

- ♦ Responsive UI and UX for optimal viewing on mobile devices and big screen network operations centers
- ♦ Centralized dashboard—Visualize the health of your out-of-band network
- ♦ Copy and paste text directly into Browser CLI
- ♦ Access managed devices by name regardless of how they are connected

SPECIFICATIONS

System Requirements	
Processor	(2) 64-bit CPU cores
Hard Drive	4 GB minimum
RAM	1 GB minimum, 4 GB recommended
Supported Environments	LES-VCMS is a virtual appliance that runs under VMware (Fusion/Workstation, vSphere/ESXi), Oracle, VirtualBox and Linux KVM-based solutions
Connectivity	(1) NIC (Realtek RTL8139 or Intel E1000); (1) VGA console for initial setup

A TYPICAL APPLICATION OF THE LES-VCMS IS SHOWN BELOW



ORDERING INFORMATION

Item	Code
LES Series Virtual Central Management System (VCMS)	
Perpetual License includes 1 Year of maintenance	
10 Nodes	LES-VCMS-10
100 Nodes	LES-VCMS-100
1000 Nodes	LES-VCMS-1000
NOTE: Annual maintenance renewal licenses are available.	

DISCLAIMER

Black Box Corporation shall not be liable for damages of any kind, including, but not limited to, punitive, consequential or cost of cover damages, resulting from any errors in the product information or specifications set forth in this document and Black Box Corporation may revise this document at any time without notice.

ABOUT BLACK BOX

Black Box is a world leading technology solutions provider specializing in complete high-performance KVM, professional A/V signal distribution and extension and switching solutions for mission-critical applications. Black Box is dedicated to delivering superior project engineering, technical support, and 24/7 customer service you can rely on for your most critical operations. Every day, our customers trust us to design, integrate, and maintain reliable control room solutions for broadcasting, post-production, stadiums & arenas, medical, air traffic control, oil & gas, government & military, and utility industries. Leave the tech to us and our comprehensive technology solutions will deliver secure connections, fast-response times, real-time collaboration and more.

© Copyright 2017. Black Box Corporation. All rights reserved. Black Box and the Black Box logo type and mark are registered trademarks of Black Box Corporation. Any third-party trademarks appearing in this publication are acknowledged to be the property of their respective owners.