

## Hardened Managed Ethernet Switches Quick Start Guide

### Available models

Part Number	Product Name	Description
<b>LEH900 Series</b>		
LEH908A	8-Port 10/100 Hardened Managed Ethernet Switch	8 ports 10/100, DC power
LEH906A-2MMSC	6-Port 10/100 2-Port 100-Mbps MMSC Hardened Managed Ethernet Switch	6 ports 10/100, 2 ports 100BFX MM SC, DC power
LEH906A-2MMST	6-Port 10/100 2-Port 100-Mbps MMST Hardened Managed Ethernet Switch	6 ports 10/100, 2 ports 100BFX MM ST, DC power
LEH906A-2GSFP	6-Port 10/100 2-Port GE SFP Hardened Managed Ethernet Switch	6 ports 10/100, 2 ports GE SFP, DC power
LEH906A-2SFP	6-Port 10/100 2-Port 100-Mbps SFP Hardened Managed Ethernet Switch	6 ports 10/100, 2 ports 100BFX, SFP, DC power

This quick start guide describes how to install and use the hardened Managed Ethernet Switch. Designed for rugged environments, Hardened Managed Ethernet Switches provide reliable switching in industrial areas constrained by space.

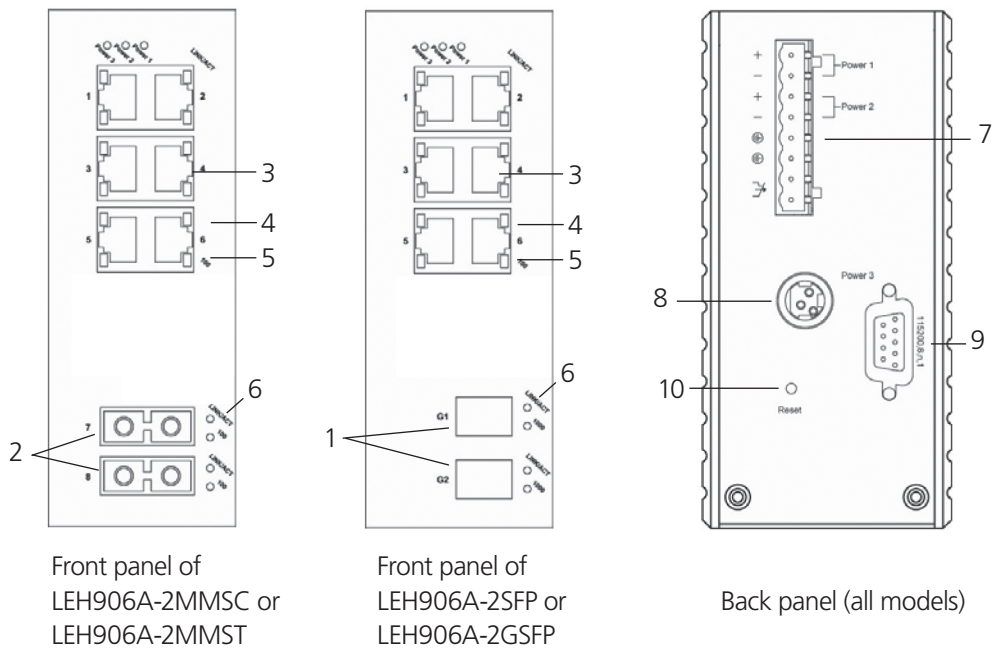
### Functional Description

- Meets NEMA TS1/TS2 Environmental requirements such as temperature, shock, and vibration for traffic control equipment.
- Meets EN61000-6-2 & EN61000-6-4 EMC Generic Standard Immunity for industrial environments.
- Supports Command Line Interface in RS-232 console.
- 100BASE-FX: Multimode SC or ST type; single-mode SC or ST type. 100BASE-BX: WDM single-mode SC type.
- 1000BASE-SX/LX: Multimode or single-mode SC type. 1000BASE-BX: WDM single-mode SC type.
- Supports 8192 MAC addresses. Provides 2M bits memory buffer.
- Alarms for power and port link failure by relay output.
- Supports DIN-rail or panel mounting installation.
- Power Supply: Redundant DC terminal block power inputs or 12-VDC DC jack, 100–240 VAC external power supply.
- Complies with EN50121-4 environmental requirements for railway applications.
- Manageable via SNMP, Web-based, Telnet, and RS-232 console port.
- Support 802.3/802.3u/802.3ab/802.3z/802.3x. Auto-negotiation: 10/100/1000Mbps, full/half-duplex; Auto MDI/MDIX.
- Operating voltage and Max. current consumption: 0.92 A @ 12 VDC, 0.46 A @ 24 VDC.  
Power consumption: 11 W Max.
- -40 to +167° F (-40 to +75° C) operating temperature range. Tested for functional operation @ -40 to +185° F (-40 to +85° C).

# LEH900 Series Hardened Ethernet Switches Quick Start Guide

## Physical Description

Designed for rugged environments, Hardened Managed Ethernet Switches provide reliable switching in industrial areas.



NOTE: LEH908A (not shown) has (8) RJ-45 ports and no ST, SC, or G1/G2 ports.

Figure 1. LEH900 Series Hardened Managed Ethernet Switch.

### LEH900 Series switches components.

Number in Figure 1	Product Name	Description
1	Ports G1 and G2	LEH906A-2GSFP: (2) GE SFP ports; LEH906A-2SFP: (2) SFP ports NOTE: These connectors are not present on LEH906A-2MMSC and LEH906A-2MMST switches.
2	(2) ST or SC fiber ports	LEH906A-2MMSC: (2) 10/100 MM SC ports; LEH906A-2MMST: (2) 10/100 MM ST ports NOTE: These connectors are not present on LEH906A-2GSFP and LEH906A-2SFP switches.
3	(6) RJ-45 ports	All LEH900 Series switches: 10/100 Mbps ports
4	(6) TX LEDs	See the Indicators table on the next page.
5	(6) RX LEDs	See the Indicators table on the next page.
6	Per port: (2) LINK/ACT LEDs	See the Indicators table on the next page.
7	(1) Phoenix connector	Terminal block for Power 1, Power 2, and Ground
8	(1) DC power connector	Links to DC power source
9	(1) DB9 connector	Used for RS-232 serial control
10	(1) Reset button	Press to reset the switch to factory defaults.

## LEH900 Series Switches Indicators

LED	State	Indication
Power 1	Steady ON (Green)	Power ON
	Off	Power OFF
Power 2	Steady ON (Green)	Power ON
	Off	Power OFF
Power 3	Steady ON (Green)	Power ON
	Off	Power OFF
<b>10/100BASE-TX, 100BASE-FX/BX</b>		
LINK/ACT	Steady ON (Green)	A valid network connection is established.
	Flashing	Transmitting or receiving data. <i>NOTE: ACT stands for activity.</i>
100	Steady ON (Green)	Connection at 100-Mbps speed.
<b>10/100/1000BASE-SX/LX/BX</b>		
LINK/ACT	Steady ON (Green)	A valid network connection is established.
	Flashing	Transmitting or receiving data. <i>NOTE: ACT stands for activity.</i>
1000	Steady ON (Green)	Connection at 1000-Mbps speed.

## Power Input Assignment

Power 3	12 VDC	DC jack
Power 2	+	12–48 VDC
	-	Power ground
Power 1	+	12–48 VDC
	-	Power ground
	Earth ground	
Relay output rating		1 A @ 24 VDC
<b>Relay Alarm Assignment</b>		
Fault	Warning signal disable for the following: <ul style="list-style-type: none"> <li>• The relay contact closes if Power 1 and Power 2 both fail, but Power 3 is ON.</li> <li>• The relay contact closes if Power 3 fails, but Power 1 and Power 2 are ON.</li> </ul>	

## Console Configuration

### STEP 1: Connect to the switch console.

Connect the DB9 straight cable to the RS-232 serial port of the device and the RS-232 serial port of the terminal or computer running the terminal emulation application. For direct access to the administration console, connect a terminal or a PC equipped with a terminal-emulation program (such as HyperTerminal) directly to the switch console port.

### STEP 2: Configure the terminal-emulation program settings.

When using the management method, configure the terminal-emulation program to use the following parameters (you can change these settings after login):

Default parameters:

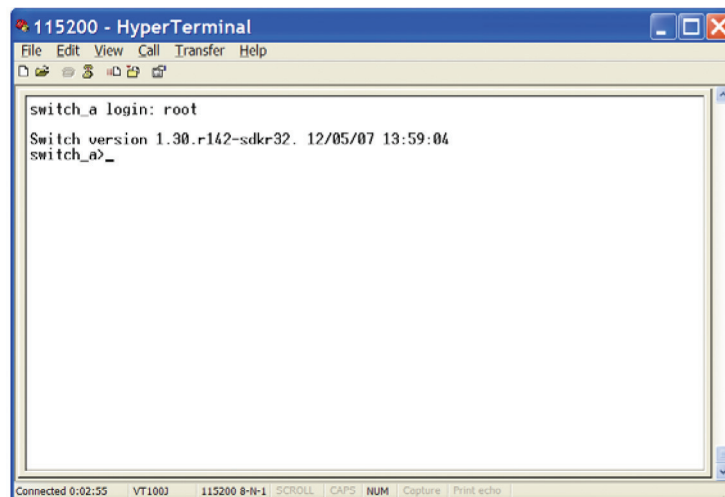
- 115,200 bps
- 8 data bits
- No parity
- 1 stop bit

### STEP 3: Press the "Enter" key.

The Command Line Interface (CLI) screen should appear.

### STEP 4: Log on to Exec Mode (View Mode).

At the "switch\_a login:" prompt, type in "root" and press <Enter> to log on to Exec Mode (or View Mode). The "switch\_a>" prompt will show on the screen.



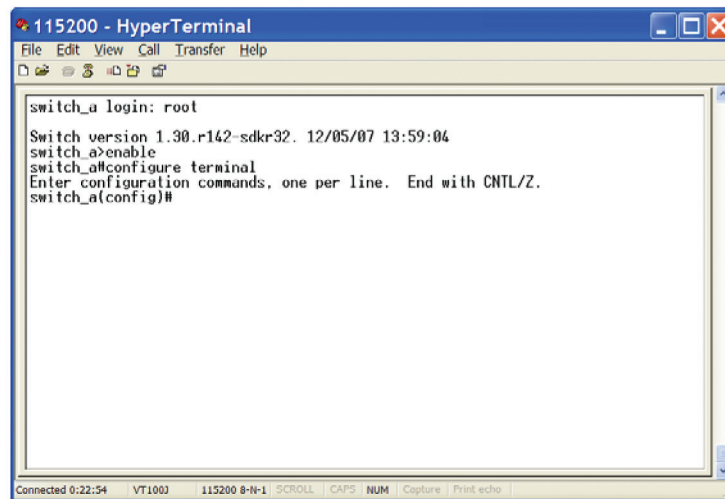
Exec mode (View mode) screen.

### STEP 5: Log on to Privileged Exec Mode (Enable Mode).

At the "switch\_a>" prompt, type in "enable" and press <Enter> to log on to Privileged Exec Mode (or Enable Mode). The "switch\_a#" prompt will show on the screen.

### STEP 6: Log on to Configure Mode (Configure Terminal Mode).

At the "switch\_a#" prompt, type in "configure terminal" and press <Enter> to log on to Configure Mode (or Configure Terminal Mode). The "switch\_a(config)#" prompt will show on the screen.



```
115200 - HyperTerminal
File Edit View Call Transfer Help
switch_a login: root
Switch version 1.30.r142-sdcr32. 12/05/07 13:59:04
switch_a>enable
switch_a#configure terminal
Enter configuration commands, one per line. End with CNTL/Z.
switch_a(config)#
```

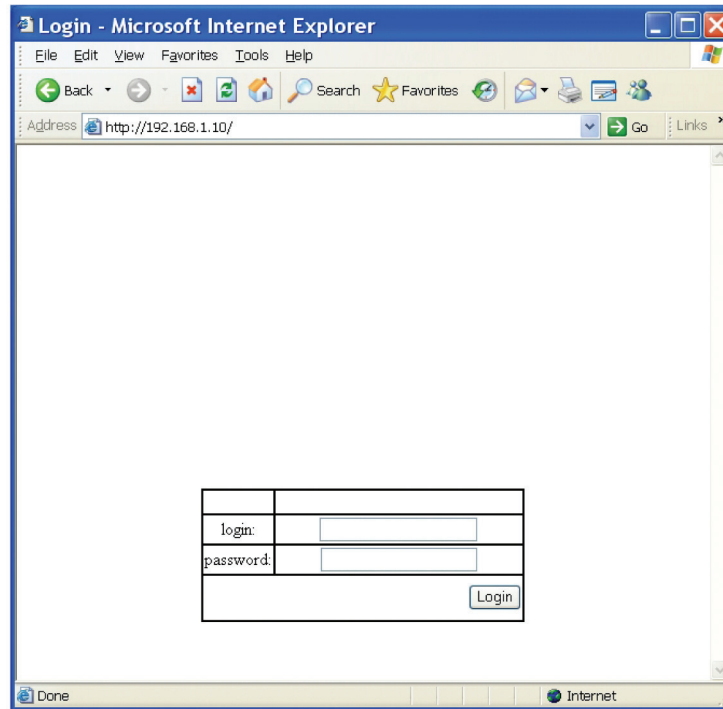
The screenshot shows a HyperTerminal window titled "115200 - HyperTerminal". The window contains a text area with the following text: "switch\_a login: root", "Switch version 1.30.r142-sdcr32. 12/05/07 13:59:04", "switch\_a>enable", "switch\_a#configure terminal", "Enter configuration commands, one per line. End with CNTL/Z.", and "switch\_a(config)#". The status bar at the bottom of the window shows "Connected 0:22:54", "VT100", "115200 8-N-1", "SCROLL", "CAPS", "NUM", "Capture", and "Print echo".

Configure terminal mode screen.

## Web Configuration

STEP 1: Login to the switch.

Specify the default IP address (192.168.1.10) of the switch in the Web browser. A login window will be shown as below:



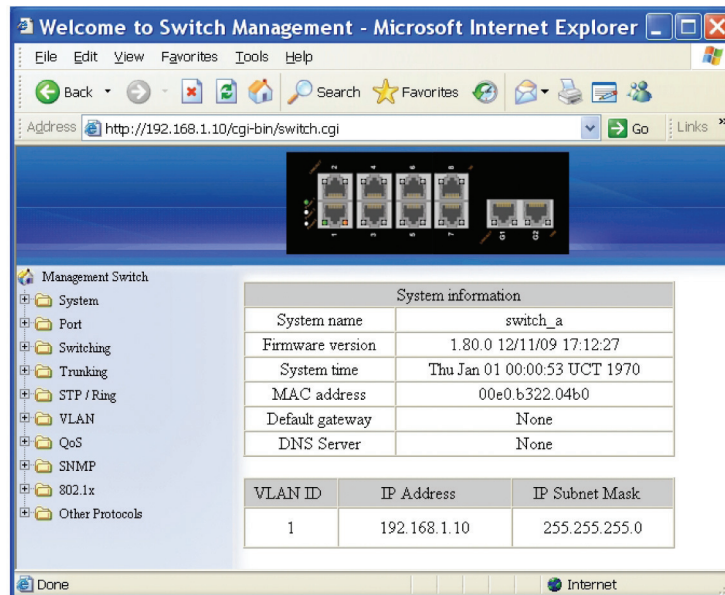
The screenshot shows a Microsoft Internet Explorer browser window titled "Login - Microsoft Internet Explorer". The address bar displays "http://192.168.1.10/". The main content area contains a login form with the following structure:

login:	<input type="text"/>
password:	<input type="password"/>
<input type="button" value="Login"/>	

Login window.

## STEP 2: Log in using the factory default settings.

- Enter the factory default login ID: root.
- Enter the factory default password (no password).
- Click on the "Login" button to log on to the switch.



Welcome screen.

**Black Box Tech Support: FREE! Live. 24/7.**

Tech support the  
way it should be.



Great tech support is just 30 seconds away at 724-746-5500 or [blackbox.com](http://blackbox.com).



### About Black Box

Black Box provides an extensive range of networking and infrastructure products. You'll find everything from cabinets and racks and power and surge protection products to media converters and Ethernet switches all supported by free, live 24/7 Tech support available in 30 seconds or less.

© Copyright 2013. Black Box Corporation. All rights reserved. Black Box® and the Double Diamond logo are registered trademarks of BB Technologies, Inc. Any third-party trademarks appearing in this manual are acknowledged to be the property of their respective owners.