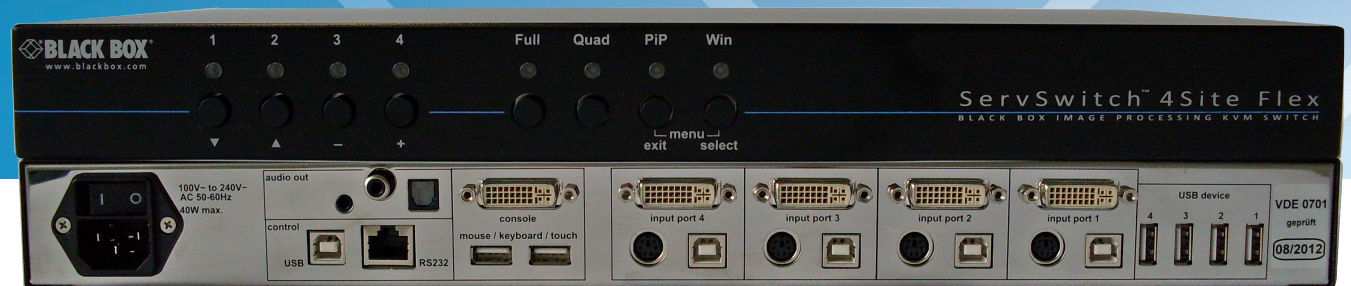


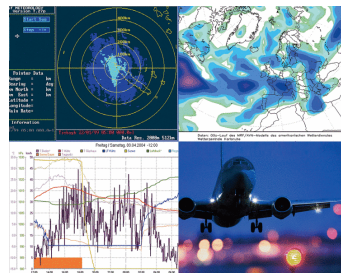
ServSwitch 4Site flex

Access up to four CPUs and
monitor all simultaneously in
real time.



FEATURES

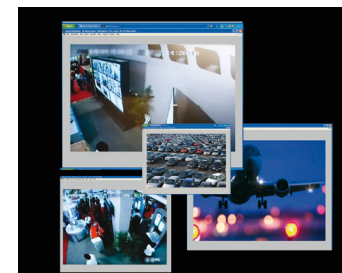
- » 4-to-1 KVM Switching with smooth real time image processing, DVI & VGA, HDMI, HDCP.
- » Four display modes: Quad, Full Screen, Picture-in-Picture and Win Mode.
- » Image rotation for vertical mounted displays.
- » Excellent video quality up to 1920 x 1200.
- » Support for USB and PS/2 keyboard/mouse.
- » Embedded digital audio.
- » Transparent USB 2.0 peripheral matrix switching.
- » Compatible with many touch screens.
- » Switching via hotkey, hotmouse, OSD, external program or serial control device.
- » Ensures short reaction times in mission critical applications.
- » Ideal for DTP, programming, trading and control rooms.



Quad mode



PiP mode



Win mode

OVERVIEW

KVM- and Peripheral-Switching plus Image Processing

The ServSwitch 4site flex simultaneously displays four analog or digital computers and video sources on a single screen in real time with smooth video performance at full refresh rates without frame dropping. Each input video can be resized and repositioned anywhere on the display. Computer sources can be controlled with just one keyboard and mouse or by touch screen. Each of the input ports can be DVI-D or VGA. Keyboard and mouse interfaces can be PS/2(r) or USB. The console port can be set to output an analogue VGA or digital DVI video signal. Keyboard and mouse is USB only.

To display more than four sources simultaneously on a single screen, the ServSwitch 4site flex can be cascaded. The switch is a ready-to-use hardware solution independent of any operating system with a high level of reliability.

Excellent video performance

ServSwitch 4site flex processes analog (VGA) and digital video signals (DVI, HDMI by adapter) via DVI-I ports as both input and output. Various video modes including HDTV up to 1920x1200, are supported in any combination as input and output. The integrated support for HDCP encryption allows the perfect display of movies and animated contents. When scaling videos up and down, the highly sophisticated 6-symbol interpolation filter guarantees brilliant image quality and sharp readability of text. The 30 bit RGB video engine ensures extremely precise rendering of colors as required in broadcasting.

Display Modes

Using the **Win mode**, all video sources can freely be resized and independently repositioned anywhere on the display, just like windows. They can overlap each other with transparent appearance. Resizing and repositioning is done by mouse or touch screen. Four customized Win modes can be saved for quick activation e. g. via front buttons 1-4.

In **Quad Mode**, the output video signal receives all four incoming video signals sharing the screen with four equal tiles (scaled). Each tile displays the entire screen content of a video source or computer.

Similar to Quad Mode, the **PiP Mode** combines more than one video signal for output on a single screen. Using the PiP Mode a single main image displays in full output resolution and up to three of the other video signals are displayed on the right-hand side of the main picture. These images can be scaled to a specific, configurable size and position.

In **Full mode**, a single source is displayed at full resolution and the entire content is fully visible. For vertically mounted displays, each image can be rotated.

No matter which of the multi viewing modes is activated, you still have full keyboard and mouse control of the selected server. Intuitive hotkey or hotmouse switching between the screen tiles, swaps the main screen and gives you full keyboard and mouse control to the new target computer. A simple hotkey takes you back into non-scaled full-screen operation in case of an emergency on one the selected servers.



ServSwitch 4Site
(KVP4004A)

Transparent Switching of USB peripherals

ServSwitch 4site flex features a transparent, high-speed USB 2.0 matrix to switch USB devices like finger printers, memory sticks, and webcams to the computers connected. The switching can be performed automatically with the active channel, or manually with and without warning. For example, a single finger printer can be used to log in on all computers connected. Data can be copied from one connected computer to the other without being networked – just via memory stick connected to one of the four USB 2.0 ports on the rear panel of 4site flex.

Audio

ServSwitch 4site flex supports 7.1 surround sound via HDMI input. Audio signals are put out via HDMI, S/PDIF (TOSLINK and RCA), or 2-channel analog stereo jack. The analog output is galvanically isolated to eliminate noise and humming induced by ground-loops. The volume can be controlled via the on-screen display (OSD) or with the audio keys on multimedia keyboards.

Switching

There are six different ways of switching video channels and display modes:

1. Using the buttons on the front of the unit
2. Using configurable keyboard short cuts (hotkeys)
3. Using mouse functions (hotmouse)
4. Using the unit's external configuration program on a remote computer
5. Via a serial port using the protocol DCP XML
6. Using a USB touch screen

Applications

The features of the ServSwitch 4site flex cover a variety of environments and many different purposes. Programmers may prefer to have a single screen on their desks but still having control over other processes, such as compilers running in the background on a second, third or fourth workstation. In NOCs or other Control Room environments, multiple sources can be monitored and operated from a single screen. Especially when being used on top of a large-scale multi user KVM switching system, the KVM signals of up to 4 user stations can be used to feed into the ServSwitch 4site flex. KVM extension then can be used to carry these four KVM signals at once over a single CATx or fibre cable in real-time. Even over IP, up to four signals can be routed or extended to a remote viewer for greater control.

What's included

KVP4004A:

- ◆ (1) ServSwitch 4Site flex;
- ◆ (2) DVI CPU cable, 2m;
- ◆ (2) VGA CPU cable sets, 2m;
- ◆ (1) Console cable;
- ◆ (1) Converter USB <-> PS/2;
- ◆ (1) Upgrade cable;
- ◆ (1) Manual on CD;

TECH SPECS

Resolution — In- & Out:

up to 1920 x 1200 @ 60Hz (DVI & VGA), HDTV modes supported, progressive (non-interlaced) with reduced blanking interval, color depth: 30 bit, 6-symbol interpolation filter, EDID adjustment

Maximum Distance — 5m to Keyboard/Mouse/Video; 5m to each computer

Connectors —

to CPU: (4) DVI-I (analog & digital), (4) 6-pin MiniDin F, (4) USB Type B, HDMI via adapter;

to console: (1) DVI-I, (2) USB Type A, HDMI via adapter;

to USB devices: (4) USB Type A;

Audio: Input: HDMI via 4 x DVI-I ports, Output: 1 x S/PDIF optical & electrical, 1 x 3.5mm analog stereo jack, or via HDMI at 1x DVI-I port (7.1 surround sound supported);

Switch Upgrade: (1) USB, (1) RJ45 serial RS232 (for updates or remote control);

Power (1) IEC320

Control Options — front panel buttons, configurable keyboard shortcuts, mouse, external device configuration program, serial control via DCP-XML, touch screen

Indicators —

(4) LEDs Status Video source 1 to 4, (1) Full mode, (1) Quad mode, (1) PiP-Mode, (1) Win Mode;

Selector Buttons — (4) Chanel Switching, (1) Quad Mode, (1) Full Mode, (1) PiP Mode, (1) Win Mode, (1) Reset; keyboard combinations (hotkeys) to configure resolution or to open OnScreen Menu;

OnScreen-Menu — Yes (English, German, Spanish)

Power — internal, 100 to 240 VAC, 50 to 60 Hz, max. 25W

Size — 4,4 x 43,6 x 23,4cm (HxWxD)

Weight — 2,9 kg

Operating Temperature — 5° C - 45° C

Humidity — 5 to 85% non-condensing

Rack Mounting — 19" rackmount kit included in delivery

Item

ServSwitch 4Site flex

Code

KVP4004A